

PowerConvert

Universal

Anywhere-to-Anywhere automated conversions between Physical Servers, Virtual Machines, and Image Archives.

PlateSpin PowerConvert streams servers between physical machines, blade infrastructures, virtual machines, and image archives over the network. PlateSpin's powerful OS Portability (patent pending) is the first and only technology that decouples data, applications and operating systems from servers, re-configures and optimizes resources, and automatically streams them to any physical or virtual platform.

PlateSpin PowerConvert enables complete migrations across Intel and AMD infrastructure in the data center. It uniquely decouples the dependency between the hardware infrastructure and the server software installed on it.

Match service level requirements with the hardware infrastructure that is unique to your data center, all from a single point of control without ever having to be in physical contact¹ with the source or target machines.

¹ For bare metal devices (e.g. new servers without the OS), the user may need to insert a PlateSpin boot-CD to properly take control of the server.

100% Automated Concurrent Conversions for "Lights Out" Consolidations

No boot CDs. No physical contact with source or target machines required. Configure multiple conversions to run concurrently, all from a single point of control.

Live Conversions

PowerConvert Live Transfer feature enables the migration of active Windows servers or the capturing of server images without taking the source servers offline or having to reboot.

Maximum adaptability with On-the-fly configuration

Reconfigure and right-size CPU, Disk, Memory and Network resources on-the-fly for target machines.

Hardware Independent Images

Create and deploy PlateSpin Flexible Images™ from servers or connect directly to popular third party images or backups for easy provisioning and recovery to any physical or virtual infrastructure regardless of hardware configuration.

PowerConvert Solutions

Accelerated Server Consolidations

Consolidating using Virtual and/or Blade Server Infrastructures

 P2V  P2P

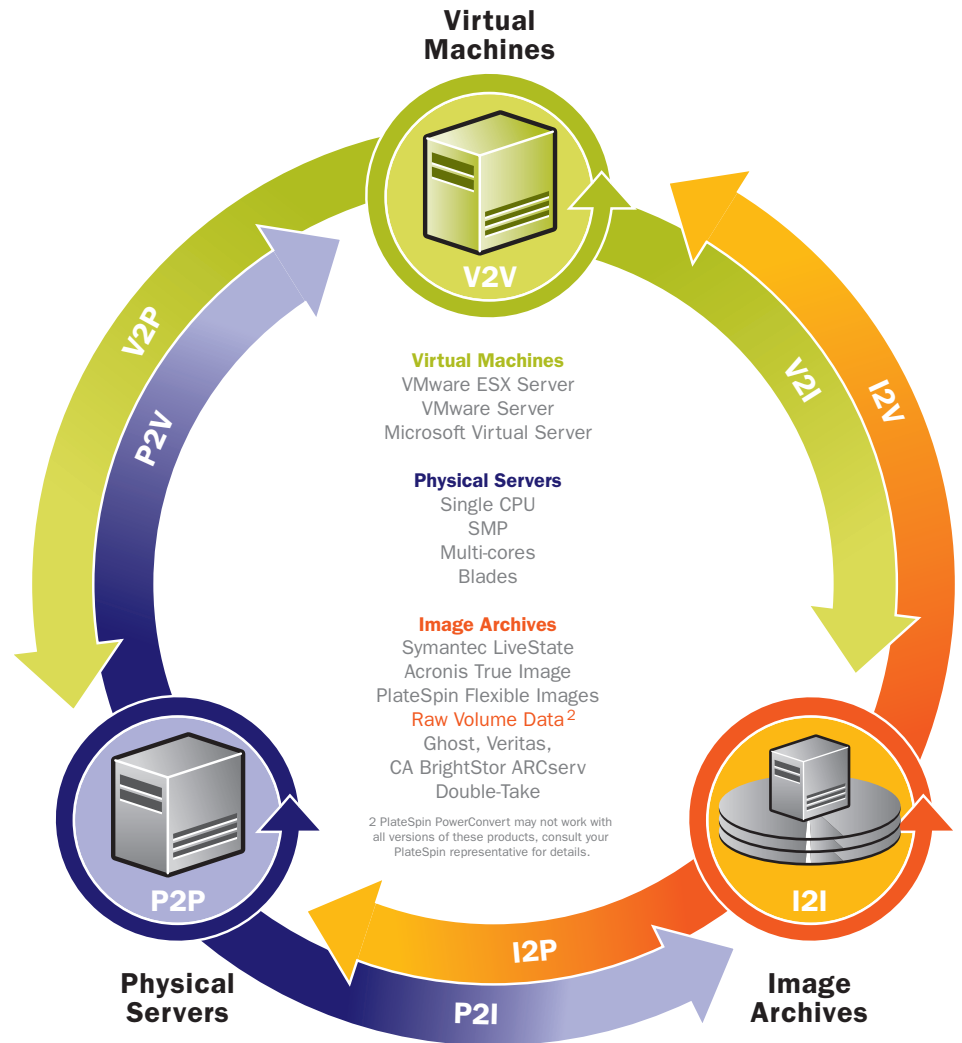
Reducing the overhead of underutilized systems is a challenge faced by almost every data center manager. Virtualization technology can help address this issue, yet many are challenged with quickly achieving a return on investment due to an inability to efficiently populate virtual servers with physical server configurations. With PlateSpin PowerConvert, server consolidations can be quickly and easily executed from a single point of control. Since no physical contact is required with either the source or target machine, manual effort and geographic boundaries are eliminated. Virtual machines can be quickly discovered and populated with the selected physical server environments, and target machine configurations can be right-sized automatically.

Continuous Server Optimization

Anywhere-to-Anywhere Migrations

 X2X

After a consolidation project is completed, servers run at more optimal utilization levels. As business conditions and application resource requirements change, some servers become over-utilized, risking vital business processes and service level agreements, while others become under-utilized and require re-consolidation. PlateSpin PowerConvert future-proofs the data center by streaming servers to and from any geographical location, onto any platform, in any direction on-demand. Servers can be virtualized and de-virtualized as required enabling the ongoing and continuous optimization of resources.



Hardware Independent Rapid Recovery

Disaster Recovery using Physical or Virtual Standby Systems

 P2V  P2P  V2P

Traditional backup and imaging solutions do not fully address the demands on the data center to maintain business continuity and enable rapid recovery from unexpected interruptions or disasters. PlateSpin PowerConvert can be used to replicate a server completely by streaming a server over the network periodically to any available physical or virtual machine that could be used as a standby. Live transfer functionality enables such migrations to be performed without taking the source server offline. In case of primary server outage, the standby system can be activated to take over the workload quickly and resume normal processing.

Disaster Recovery using Flexible Infrastructure Restore

 P2I  I2V  I2P

PlateSpin PowerConvert's flexible infrastructure restore capabilities enable hardware-independent recovery to provide greater flexibility and speed to meet Recovery Time Objectives (RTO). Replicate a server completely by scheduling the capture and conversion of a server to a hardware independent image (PlateSpin Flexible Image). Capture images for critical servers without taking the source server offline. Redeploy the image to any physical server or virtual machine. In addition to PlateSpin Flexible Images, PowerConvert leverages existing investments in 3rd party imaging technologies by deploying those images in the same hardware independent manner.

Maintenance and Support Agreement Integrity

De-virtualize Applications to Protect Maintenance and Support Agreements



Many application vendors do not currently support installations on virtual platforms. Data centers that have virtualized applications may find that their vendor is not willing to support them as virtualization violates the maintenance and support agreement. PlateSpin PowerConvert can de-virtualize the servers with these applications installed on them and stream them back to physical boxes over the network so that support agreements can remain valid, protecting the investment and maintaining support within the bounds of existing contracts.

New Server Provisioning

Hardware Independent Server Provisioning



When new servers arrive in the data center, the IT Operations team usually has a process to provision the servers, either manually, or with a provisioning solution (which is highly scripted). PlateSpin PowerConvert can capture an entire library of hardware independent images (PlateSpin Flexible Images), and deploy them to new servers quickly and easily over the network, without having to manually configure the hardware, drivers, etc.

Data Center Relocation

Migrating Servers Across Geographic Locations



Moving resources between data centers traditionally requires physically shipping servers to new locations or rebuilding servers from scratch. PlateSpin PowerConvert eliminates this need as a server can be streamed directly from one geographical location to another over the network. If no high speed WAN exists, PowerConvert can capture the server images onto a CD or USB drive, which can then be shipped and deployed at the target site.

Test Lab Automation

Virtualization, Consolidation and Automation



For every production server, there is at least one identical server in the test lab where application developers and QA teams could test new or changing applications. To reduce the number of servers in the test lab for cost savings, data centers are turning to virtual platforms for test lab consolidation. PowerConvert enables a virtual test lab system by automating the setup and teardown of replica production environments shared by the application development and QA teams. Replicate the test lab environment (P2V) without manual effort and apply changes to the production environment using V2P functionality, relieving the burden of manually provisioning test lab environments and automate the entire process.

End-of-Lease Hardware Migrations

Migrations between Physical Servers



Managing data center resources requires dealing with machines that are nearing the end of their lifecycle or lease. This includes the challenge of migrating key applications from old to new infrastructures such as blades. The traditional approach of rebuilding the system by reinstalling the OS, applications and data is time consuming and costly. With PlateSpin PowerConvert, simply stream the server software layer (data, applications, and operating systems) from the old machine to the new using the drag-and-drop interface. Any necessary changes to operating systems to adapt to the new hardware are made automatically on-the-fly.

Automated upgrades to VMware ESX 3.0

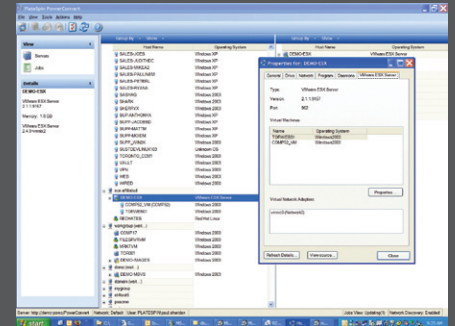
Dramatically reduce the time to upgrade



Upgrade from VMware ESX Server 2.5 to VMware ESX Server 3.0 with minimal downtime using PowerConvert's Live Transfer functionality. Full configuration control enables users to reconfigure virtual machines as needed during the conversion. The result is a fully updated native VMware ESX Server 3.0 virtual machine.

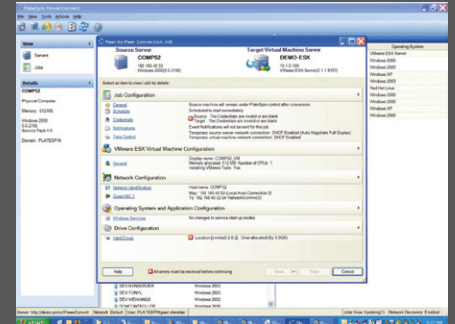
Step 1: Discover

The PlateSpin PowerConvert Server View displays discovered network servers in a single control console. To initiate server migration or recovery simply drag and drop the icons from the source to target environments – whether they are physical servers, virtual machines or image archives. Run the system check utility prior to conversion to validate what servers are ready for automated conversion and what their inventory contains.



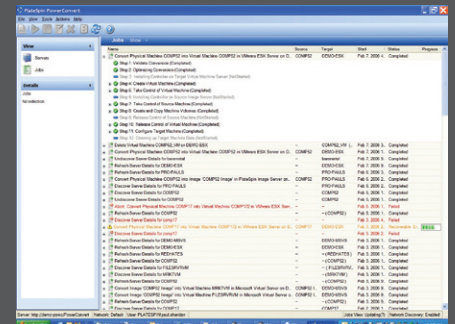
Step 2: Configure

Configure the job, virtual machine, network, drive, OS attributes plus many other options on-the-fly to optimize the target server as part of the conversion.



Step 3: Job Monitor

The PlateSpin PowerConvert Job View monitors the progress of a conversion or job deployment through real-time job views. Additionally, real-time email alerts allow "Lights-Out" conversions.



PowerConvert Features

Anywhere-to-Anywhere Conversions

Optimize data center flexibility and adaptability

Convert between any combination of source and target, in any direction, whether physical, virtual, or image.

Live Transfer

Perform migrations without taking servers offline

PowerConvert Live Transfer enables the migration of active Windows servers or the capturing of server images without taking the source servers offline or having to reboot.

Secure Conversions

High security protocols protect data

128-bit AES encryption and end-to-end SSL support provides state-of-the-art protection for high-security environments.

Workload Adaptability

Continually optimize resources through the business application lifecycle

Adapt to the constantly changing hardware landscape and business process demands by performing direct conversions from source to target machine without the need for intermediate steps and staging servers.

Automatic Discovery

View the entire landscape for easy deployment

Automatically discover existing physical or virtual machines through the network for complete hardware, OS, services and application inventory. Easily identify servers for consolidation, disaster recovery, or test lab projects.

Drag and Drop Interface

Reduces the learning curve and shortens the time to convert

Expertise is built in. Advanced OS or virtual knowledge not required. Use the drag-and-drop interface to discover and convert.

Source System Integrity

Minimizes risk

Source systems remain unchanged. After the conversion, the system optionally restarts the source machine and you're production-ready.

PlateSpin Flexible Images

Saves time and effort

Capture server images remotely without the need to visit servers. Since no software or agents are installed on the imaged server, change request needs are minimized. Schedule image captures to keep image repositories updated for quick image deployment at any time.

On-the-fly Configuration

Adapt quickly to available resources

Reconfigure and right-size CPU, disk, memory and network resources on-the-fly to adjust to target machine resources. Change critical parameters on restore and right-size the target to match workload needs.

Image Support

Multiple Image support leverages existing image inventory

Reuse and redeploy images (PlateSpin or Third-Party) over and over, across different hardware for quick conversion deployment. Capture it once, re-use it repeatedly

Remote Control

Reduce overhead through a single conversion control point

No boot CDs and no physical contact with source or target machines is required, saving time and cost related to having IT staff on site at remote locations.³

3 For bare metal devices (e.g. servers without operating systems), the user may need to insert a PlateSpin boot-CD to properly take control of the server.

PowerSDK

Develop applications that leverage PlateSpin's OS Portability

The PowerSDK allows ISVs, service providers, and data centers to easily integrate PlateSpin's OS Portability technology into applications through industry standard protocols. The rich object based .NET API provides an ideal integration point for advanced in-house and commercial management systems

Platform Support

PlateSpin PowerConvert supports multiple hardware, operating systems, disk images, and virtual infrastructures:

Virtual Machines

- VMware® ESX Server 2.1 and higher (including 3.0)
- VMware® Server
- Microsoft Virtual Server 2005, 2005 R2

Operating Systems

- Windows NT Server (SP4, SP6a)
- Windows 2000 Server
- Windows 2000 Advanced Server
- Windows 2003 Server
- Windows 2003 Server R2
- Windows XP Professional (SP2)
- Redhat Linux (7.3, 8.0)
- Redhat Enterprise Linux (AS, 3.0, ES 3.0)
- SUSE Linux Enterprise (9)

Image Archives

- Acronis® True Image™
- Symantec® LiveState™
- PlateSpin Flexible Image Packages
- Symantec® Ghost™

Backup Solutions

- Raw Volume Data
- Veritas® Backup Exec™
- CA BrighStor ARCserve r11
- Double-Take® by Double-Take Software

System Requirements

PowerConvert Server

- Windows 2000 Server (SP4)
- Windows 2000 Advanced Server (SP4)
- Windows 2003 Server

PowerConvert Client

- Windows 2000 Server (SP4)
- Windows 2000 Advanced Server (SP4)
- Windows XP
- Windows 2003 Server

IIS 5.0 and up and the .NET Framework 2.0 (including ASP.NET) must be installed prior to installing the PowerConvert Server and Client

Disk requirements

- 1.5 GB of free disk space

Memory requirements

- Minimum 512 MB of RAM

© 2006 PlateSpin Ltd. All rights reserved. PlateSpin and the PlateSpin logo are registered trademarks of PlateSpin Ltd. PlateSpin OS Portability technology and related products are protected under patent pending. Microsoft, Windows and Windows NT are registered trademarks of Microsoft Corporation. Linux is a registered trademark of Linus Torvalds. All other marks and names mentioned herein may be trademarks of their respective companies. June 2006 – Doc 005

Version 5.5

PlateSpin Ltd.

144 Front Street West
Suite 385
Toronto, Ontario
Canada M5J 2L7

Phone: 416 203 6565
Fax: 416 593 5557
Toll Free: 1 877 528 3774
www.platespin.com



see. think. respond.